

Belgian Association of Anglicists in Higher Education



Join us online to discuss

**Student trips and excursions:
Tips, tricks, dos and don'ts**

Thursday 5 June 2025 @5 pm

Registration and info at:

events.unamur.be/e/trips

Thanks to ... for info about...



- **An Baeyens** (UGent)
- **Sylvie De Cock** (suggestions about excursions)
- **Lara Dutry** (KUL Kortrijk)
- **Caroline Gentens** (KUL Leuven)
- **Lobke Ghesquière** (UMons)
- **Emma-Louise Silva** (UAntwerpen)
- **UNamur students** who responded to a small online survey (N = 12 out of 21)

Aim



- exchanging / comparing experiences
- but also simply mutual information: ‘who is who’ / ‘who has organized what’
- with the potential to get in touch with specific colleagues on specific questions / help with planning etc. afterwards

Destinations, durations, group size



- a lot of London or London-centric trips, often around 20-25 students
 - Antwerp: MA (extended to BA3); Kortrijk BA1/BA2; Namur BA2/BA3
 - Mons & Leuven: larger groups (30 – 40); BAB1 for Mons; BA2 (extended to BA3, MA) for Kortrijk
 - also Oxford, Dublin, Edinburgh (e.g. UC Louvain: Dublin, EDB, LDN)
- Kortrijk: combining Oxford & London
- mostly February or spring/Easter break (Mons: September, but might change to spring break)
- mostly 3 days (Namur: 4), and Eurostar (cf. avoiding plane)
- very different formula: Ghent (see below)

FYI a bit of London feedback



- not included in this year's Namur trip: Hampton Court Palace (almost a day trip, but very worthwhile, especially if you can get the 'school rate')
- average ratings for 'paid' visits on this year's trip (N = 12 out of 21) (maximum score = 5)
 - Shakespeare's Globe Theatre **4.83**
 - Parliament (self-guided audio tour) **4.50**
 - Southwark Cathedral (brief guided tour with focus on literature) **4.08**
 - Tower of London **4.00**

FYI a bit of London feedback



2. What did you like best about the trip as a whole?

[More details](#)

12
Responses

Latest Responses

"I find that we saw a lot of things that were extremely interesting. I was really impre... "

"The walks in the streets"

"The diversity of the visits and the good atmosphere."

...

6 respondents (50%) answered Parliament for this question.

Word cloud visualization of responses:

- Parliament
- visit of the Parliament
- impressed by the visit
- diversity of the visits
- lot of things
- best visits
- interesting things
- magnificence of the parliament
- Lots of activities
- Globe Theater
- Westminster Palace
- informal context
- globe theatre
- Lots
- visit to the Globe
- interesting
- Globe and the Parliament
- students
- Theater & The Parliament
- things

FYI a bit of London feedback



3. What did you like least about the trip as a whole?

[More details](#)

12
Responses

Latest Responses

"The fact that we didn't have real free time. The schedule was probably too busy."

"Too many things to see, sometimes too much visits"

"Having most of the free time only during the evening."

...

5 respondents (42%) answered Museum for this question.

lot

Museum

day

free-time

Tate Modern

students are free

FYI a bit of London feedback

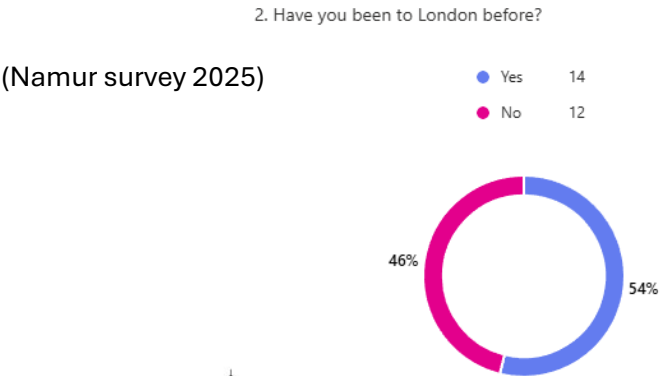
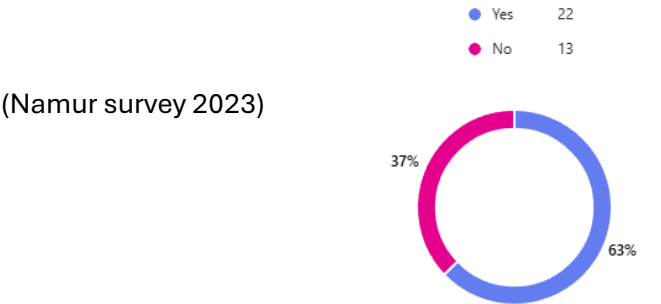
14. Do you think we should consider other Anglophone destinations? (There are practical implications to this of course: ideally we want to avoid travelling by plane, but maybe you don't agree with this. But staying on the train, destinations like Oxford or Cambridge could still be realistic. Our group is too small to hire a bus.) If you have any thoughts or suggestions you'd like to share, you can do so here. No worries if not.

5 Responses

ID ↑	Name	Responses
1	anonymous	<u>Oxford and Cambridge are nice destinations, but maybe as a one day trip during the London trip</u>
2	anonymous	Why not?
3	anonymous	<u>I totally agree that the plane should be avoided. I think London is a good choice because although I have already been there, there were lots of things I had not seen.</u> Other destinations could also be interesting, but I don't know if there is enough to visit.
4	anonymous	London is good, there are many things to see
5	anonymous	I think London is really a city to see at least once in a lifetime (especially with our studies). It may be the occasion for students who don't have the opportunity to travel a lot to go there.



2. Have you been to London before? [More details](#)



Oxford feedback



- Caroline shared some (very positive) feedback about the Leuven 2025 trip to Oxford:
 - most students hadn't yet been (different compared to London)
 - generally they felt safer in a smaller city
 - given that there was a lot of free time in their schedule, London felt like an embarrassment of riches (too much to choose from, leading to paralysis)

Destinations, durations, group size



- very different formula: Ghent
 - coach
 - 44 students: BA2/BA3/MA/PG
 - 2025: south coast of England (hotel: Brighton), including Hastings (castle), Seven Sisters, Brighton, Portsmouth, Stonehenge, Salisbury, Dover Castle
 - a similar, past coach trip took in destinations such as Oxford, Blenheim Palace, the Cotswolds
 - 5 days
 - needs a somewhat larger group in order to justify/fill the coach

Destinations, durations, group size



- FYI a very different type of ‘London’ visit
 - Bernard De Clerck shares info about the Economics faculty in Ghent (with large student groups) organizing trips to London (and also New York) that are very different from our typical ‘cultural-historical-literary’ trips (e.g. visiting the stock exchange, etc.), but which could be of great interest to people teaching, e.g., Business English, specialized translation in economic domains, etc.
 - if this type of trip interests you, feel free to contact Bernard for him to put you in contact with someone



Itinerary



- feel free to contact specific colleagues to see if they want to share examples of itineraries
- general principle: plan around visits with set timings
 - this includes both paid visits, and some visits which are free but which require booking a time slot (e.g. British Museum, National Portrait Gallery)
 - these timed visits form the basis of the schedule and the rest is planned around it geographically
- some examples of activities/visits beyond ‘classics’ (museums, buildings):
 - play/musical in The Garrick, guided walking tours (e.g. of Brixton, of Bloomsbury; guided poetry walk)

Cost considerations



- estimated costs in our small BAAHE survey varied, but perhaps the question wasn't specific enough (e.g. is subsidy included or not, are meals included or not)
- ranging from 220 euros to 415
 - but e.g. for Kortrijk it was mentioned that 'part of the student fee is sponsored by the department'
 - for Namur, 220 is what students had to pay to us, for us to cover most of the Eurostar and the hostel (and the department covered the guided or otherwise paid visits)
 - some colleagues included some meal costs in the amount cited
- extra costs in the last few years (passport requirement) or since April (Electronic Travel Authorization)

Cost considerations

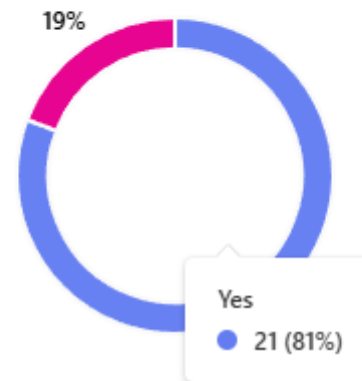


- FYI on the passport requirement (earlier questionnaire)

3. Do you have a valid passport? (Note, this is not the same as an ID card!)

[More details](#)

● Yes	21
● Not yet. I understand I will have to obtain this ahead of March 2025 if I'm coming on the trip.	5



Cost considerations (2)



- student feedback:
 - estimated cost for public transport for four days: +/- 30 euros (+/- 10 euros per day)
 - estimated other expenditure (meals, drinks), ranging from 50 euros for a very frugal student to a few big spenders above 100 euros

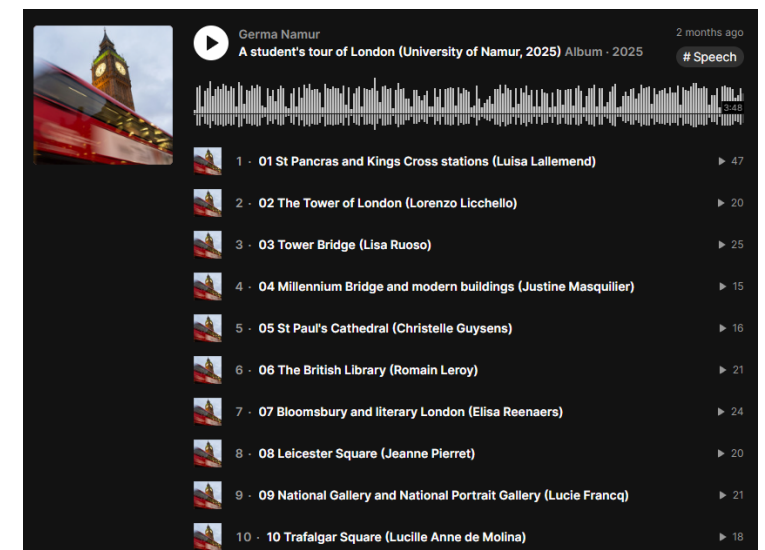
Responses

100
around 105 eu
55€
Around 90€
150 euros
Around 60 euros
Roughly, on average 94€ (drinks, food, coffees etc during the day)
Around 50€. I've tried to keep those costs as low as possible so I only paid for meals, no cookies or coffees on the way.
I've spent around 100 - 110 for food and drink (including bars and pubs).
80
137€

Possible assignments



- Namur is the exception here in requiring some student work ahead of the trip (quid pro quo reasoning: departmental subsidy)
- each student selects one assigned topic
 - text (feedback & correction cycle)
 - spoken text (feedback)
 - recording
 - ‘podcast’ on soundcloud, listened to on site:
<https://soundcloud.com/germa-namur/>



Topics (fyi)

1. St Pancras and Kings Cross stations (HP platform, Larkin roundel, Tracey Emin 'I want my time with you', Betjeman statue, Sir Elton John's piano)
2. Bloomsbury and literary London (Virginia Woolf and the Bloomsbury Group, the Charles Dickens Museum ...)
3. Harrods (luxury department store and food hall)
4. St Paul's Cathedral and Sir Christopher Wren
5. Millennium Bridge and the Walkie Talkie, Cheese Grater, Gherkin, ... buildings
6. The Tower
7. British Library (and Newton statue in front) and Treasures of the British library: highlights such as Sir Gawain and the Green Knight, Magna Carta, Tyndale's New Testament, Shakespeare's First Folio
8. Tower Bridge
9. Leicester square
10. Shakespeare's Globe Theatre (and Sam Wanamaker)
11. Tate Modern (formerly Bankside power station)
12. National Gallery and National Portrait Gallery
13. Buckingham Palace (Changing the Guard ceremony, Victoria Memorial, the Mall)
14. Big Ben and Palace of Westminster
15. Westminster Abbey (including Poets' Corner)
16. London's parks, including Hyde Park and Regent's Park
17. The V & A (and the Green Dining Room)
18. Covent Garden (West End / Theatreland, Seven Dials Market, Neal's Yard)
19. Trafalgar Square, Nelson's Column, Fourth Plinth (and possibly St Martin-in-the-Fields)
20. Mayfair (Bond Street, Savile Row...)
21. Southwark Cathedral



Possible assignments



15. Finally, a question about the audio guide assignment. Please indicate to what extent you agree with the statements below.

● Strongly agree ● Agree ● Disagree ● Strongly disagree ● Neutral

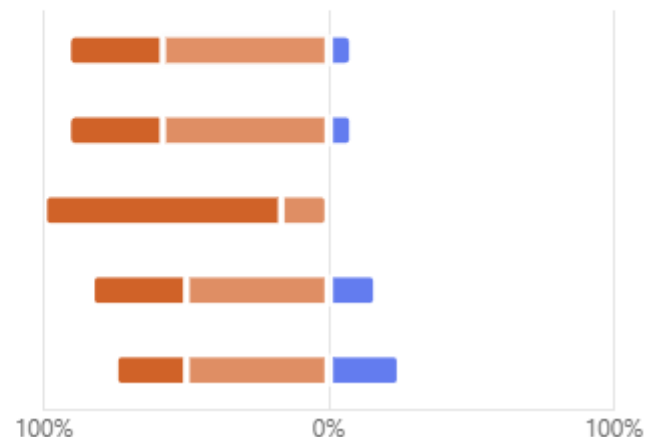
The exercise was interesting to do

The feedback on the written text was helpful

The feedback on the oral trial recording was helpful

The experience of recording in the studio was new and interesting to me

Listening to tracks at various points during the trip was a nice idea



Possible assignments



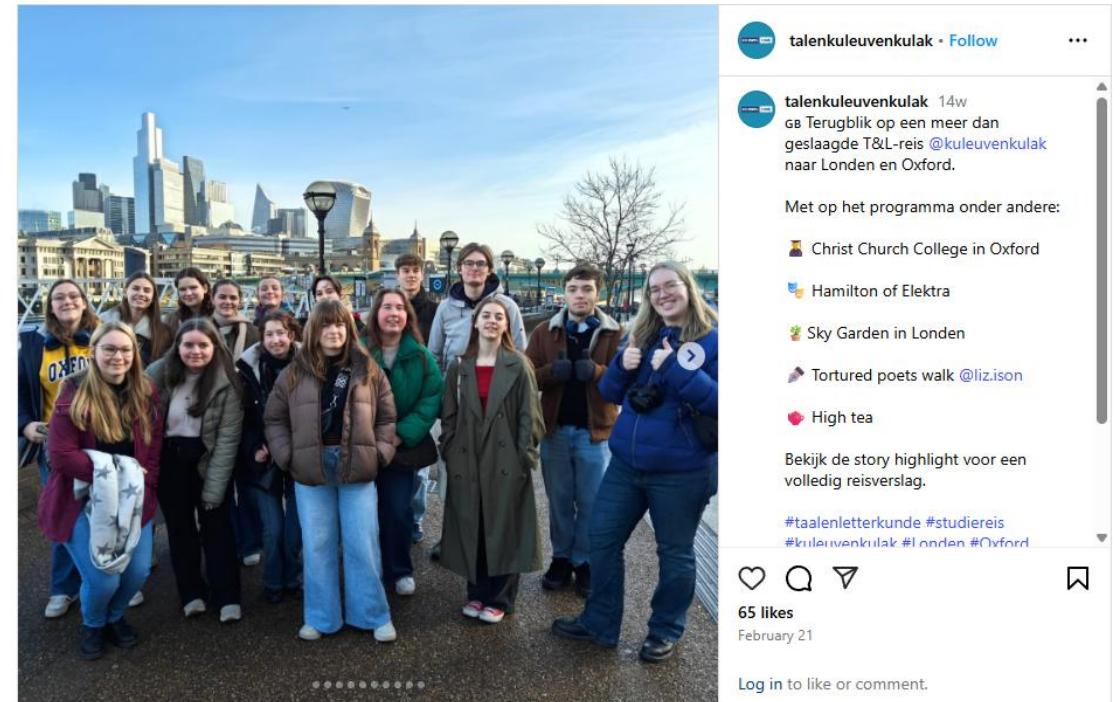
- just a light-hearted ‘set task’ at the National Portrait Gallery: list of literary figures to take a selfie with and post to the Whatsapp group



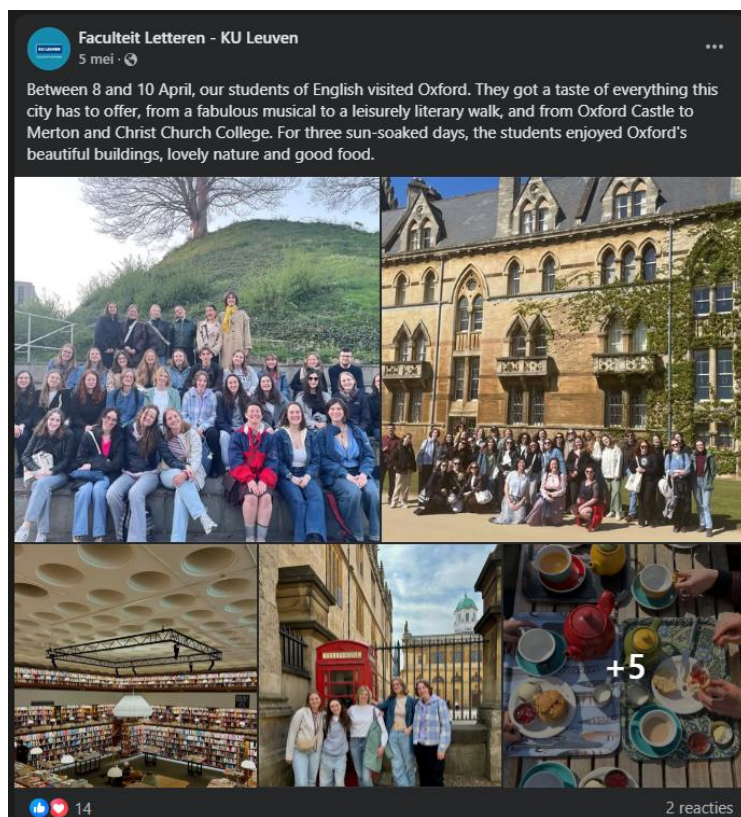
Comms



- internal:
 - in the run-up:
Blackboard/Toledo/Moodle, Teams group/facebook group, email
 - on location: Whatsapp group
- external: facebook/Instagram/LinkedIn



Comms



An Baeyens • 1st

Freelance translator and EU-accredited interpreter turned trainer

1mo •

Wat doen docenten Engels aan de [Vakgroep Vertalen, Tolken en Communicatie](#) tijdens de paasvakantie? Onze geliefde studenten ons geliefde Engeland beter leren kennen!

Wat stond er deze keer op het programma?

- ✓ 7/4: Hastings (Castle) & Birling Gap (The Seven Sisters)
- ✓ 8/4: Brighton
- ✓ 9/4: Stonehenge & Salisbury (Cathedral)
- ✓ 10/4: Portsmouth (Historic Dockyard)
- ✓ 11/4: Dover (Castle)*

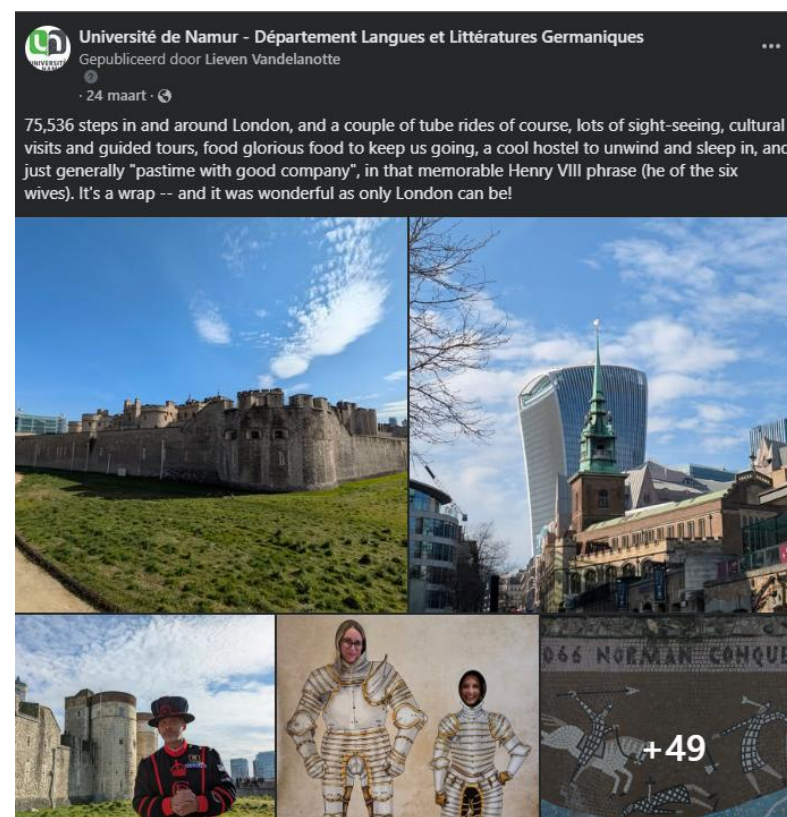
* En de lokale Morrisons natuurlijk om een decadente voorraad scones, clotted cream, brown sauce en Yorkshire Tea in te slaan ... It's not hoarding, it's strategic stockpiling. 🍪

© Reizen [Baeyens](#), [Buelens](#), Chan & [Van Liefferinge](#)

Show translation



B2H SPOTLIGHT



Suggestions for excursions



- CUETG (Antwerp / Leuven) <http://www.cuetg.co.uk/> and other theatre excursions
 - <https://www.theatreinbrussels.com/listings/>
 - <https://theatreinbrussels.com/ecc/> (English comedy club)
 - <https://www.batsantwerp.be/> (British American Theatrical Society)
- other 'BAAHE-relevant' opportunities of interest to students
 - 'Flanders fields' trip ('In Flanders Fields' museum <https://www.inflandersfields.be/>, cemeteries, Talbot House (Poperinge) <https://www.talbothouse.be/>, Passchendaele Museum (Zonnebeke) <https://passchendaele.be/>...)
 - Red Star Line, Antwerp <https://redstarline.be/>
 - Bastogne War Museum <https://www.bastognewarmuseum.be/>
 - The Brussels Brontë Group <https://www.thebrusselsbrontegroup.org/events/>
 - exhibitions (e.g. years ago at MSK Ghent: "British Vision")



CONFERENCE

Fri 12 Dec 2025

LANGUAGE
ACROSS

AND
THE

LITERATURE
LIFESPAN

Invited speakers:

Michael Erard

Vanessa Joosen

Info, submission and registration:
lifespan.unamur.be





BAAHE MEMBERSHIP RENEWAL

**Please continue supporting BAAHE
by renewing your membership today.**

The 2025 membership dues amount to €40 for tenured members and €30 for students, non-tenured and retired members, and should be paid into BAAHE's bank account BE68 0015 2136 1134. Please notify the treasurer when payment has been made (lobke.ghesquiere@umons.ac.be).